

# The Synergy of Theory and Practice: Duale Hochschule Sachsen



*Studium mit Gehalt.*



Leipzig



Riesa



Bautzen



Dresden



Glauchau



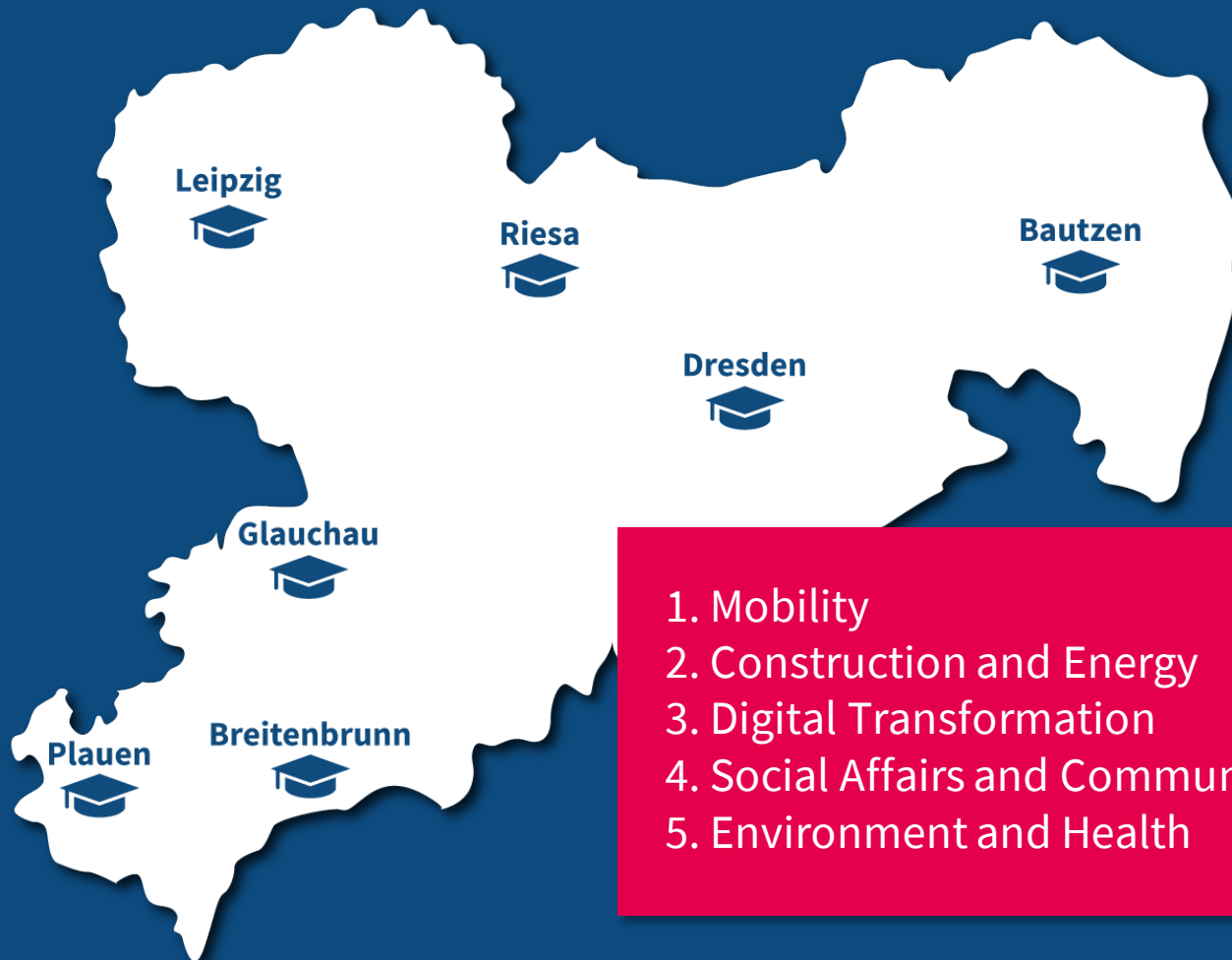
Breitenbrunn



Plauen



**7**  
locations



1. Mobility
2. Construction and Energy
3. Digital Transformation
4. Social Affairs and Community
5. Environment and Health

**5**  
**fields of  
competence for  
research and  
transfer**

## ECONOMIC SCIENCES



## ENGINEERING SCIENCES



## SOCIAL AND HEALTH SCIENCES

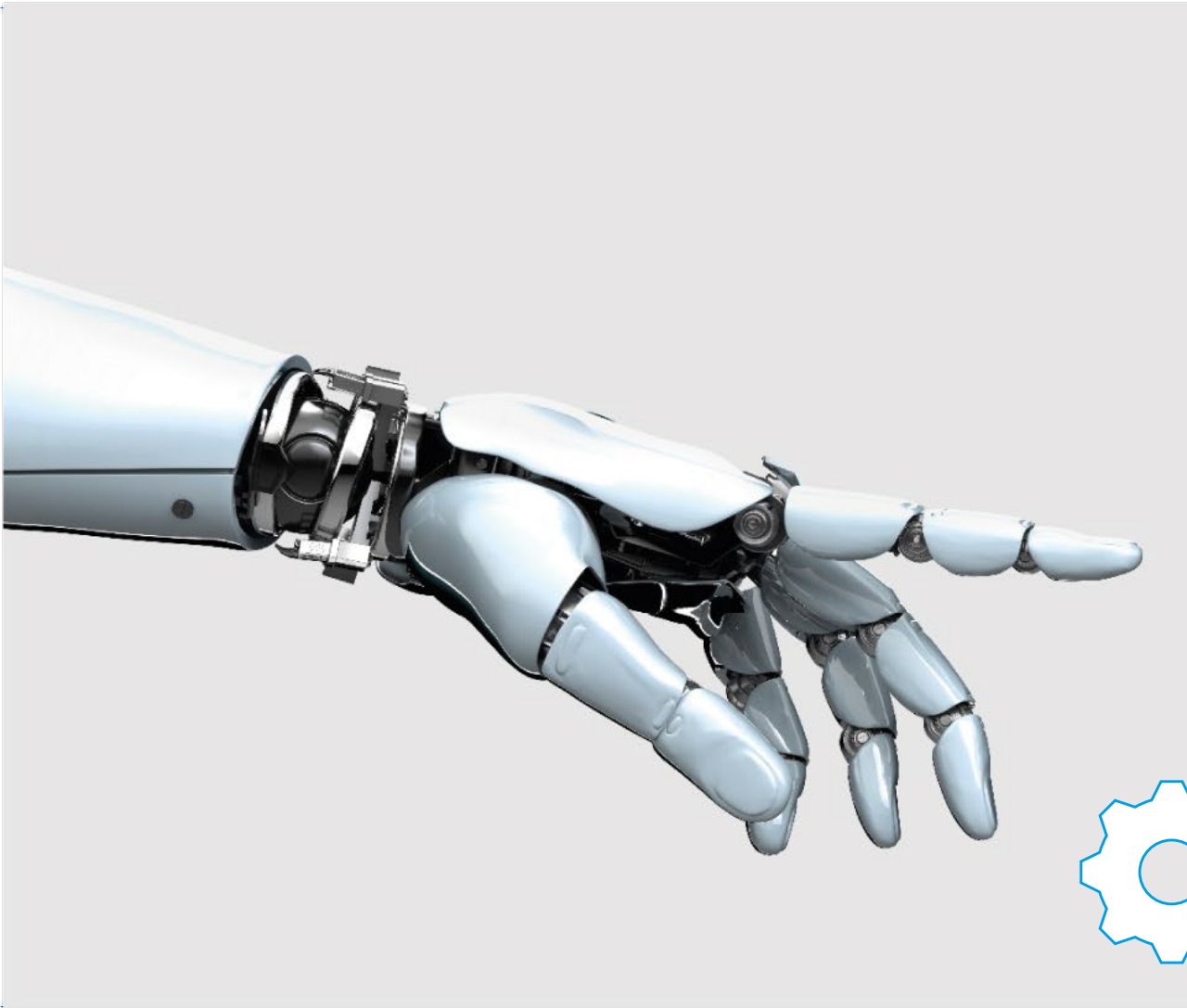


**60+**  
degree programs  
that empower  
your future

# The principle of cooperative education: theory meets practical excellence

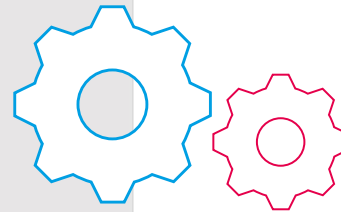






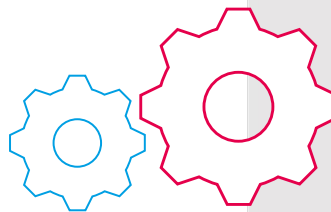
# UNIVERSITY OF COOPERATIVE EDUCATION

Learn scientific, theoretical and  
practical course contents



# **PARTNER COMPANY**

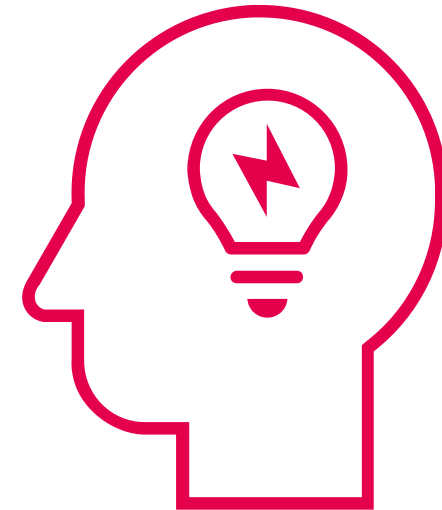
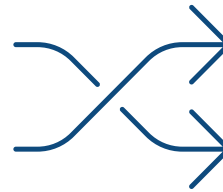
Gain transferable knowledge  
and practical work experience





**3 months  
at university**

**alternate**



**3 months  
at partner company**



## Parameters of success:

**90%**

placement  
immediately  
after graduation

**1,042€**

Ø training  
allowance  
per month

**35,080**

number of graduates  
since 1991

**4,300+**

enrolled  
students

Status 2024-10-31



**Prof. Dr. Albrecht Löhr**

Professor  
Staatliche Studienakademie Bautzen

[albrecht.loehr@dhsn.de](mailto:albrecht.loehr@dhsn.de)  
[www.dhsn.de](http://www.dhsn.de)

**Ilona Scherm**

International Cooperation  
Rector's Office Glauchau

[ilona.scherm@dhsn.de](mailto:ilona.scherm@dhsn.de)  
[www.dhsn.de](http://www.dhsn.de)